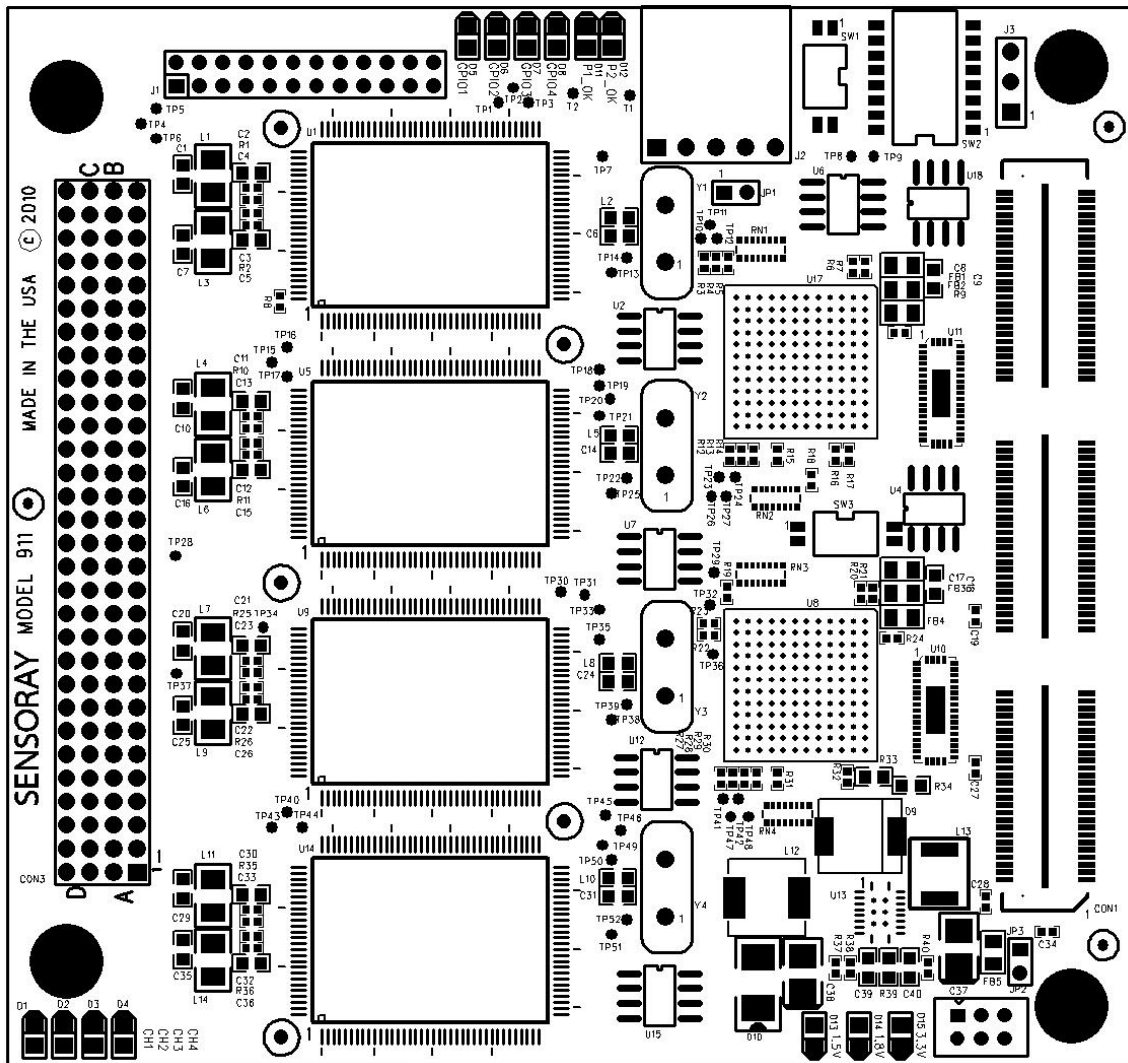


Board Layout



Connectors

J1	24-pin Connector: break-in/out for Composite Video Input for Channel-1, 2, 3, and 4 S-Video Input for Channel-1, 2, 3, and 4 Stereo/mono Audio Input for Channel-1, 2, 3, and 4 Digital Input/Output for Channel-1, 2, 3, and 4
J2	General Purpose Digital I/O: configurable Digital Inputs for Channel-1, 2, 3, and 4 or Digital Output for Channel-1, 2, 3, and 4