

2255 AVStream driver installation instructions. April 2008

There are two methods to install the driver. The first is when the "add new hardware" wizard pops up.

The second is if the non-DSHOW, non-AVSTREAM 2255 driver is already installed.

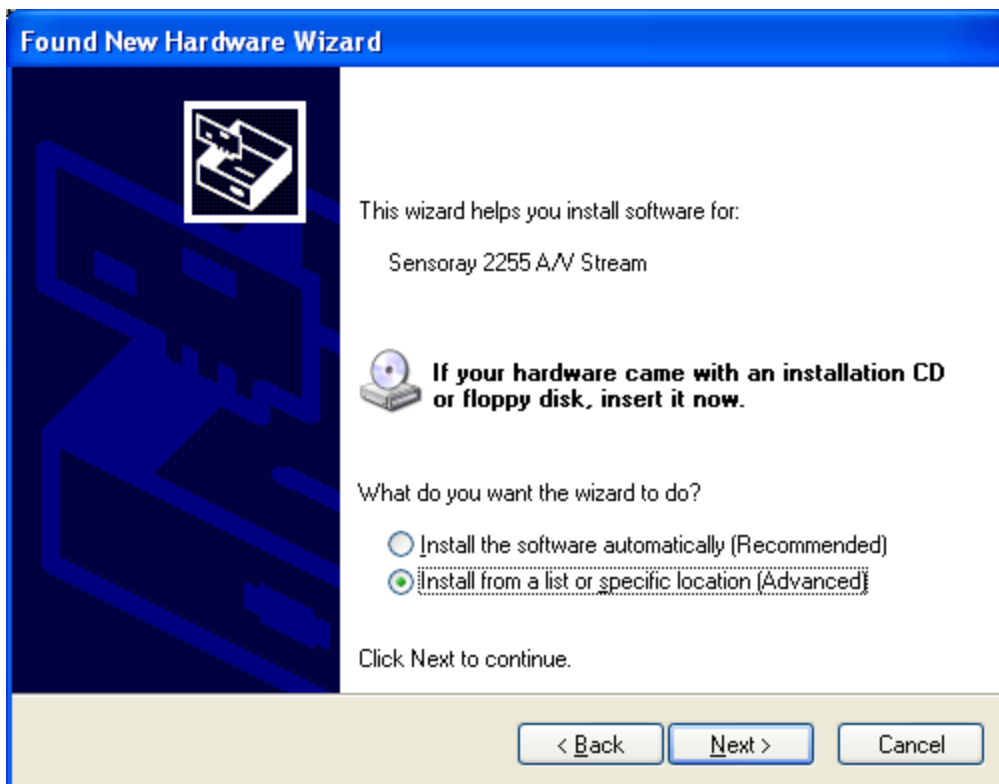
After the driver is installed, the demo program in code_dshow\Release can be run. Also see the README for using the driver in a third party DirectShow application(VideoLan).

The instructions below assume the zip package was extracted to c:\s2255av_vXYZ.

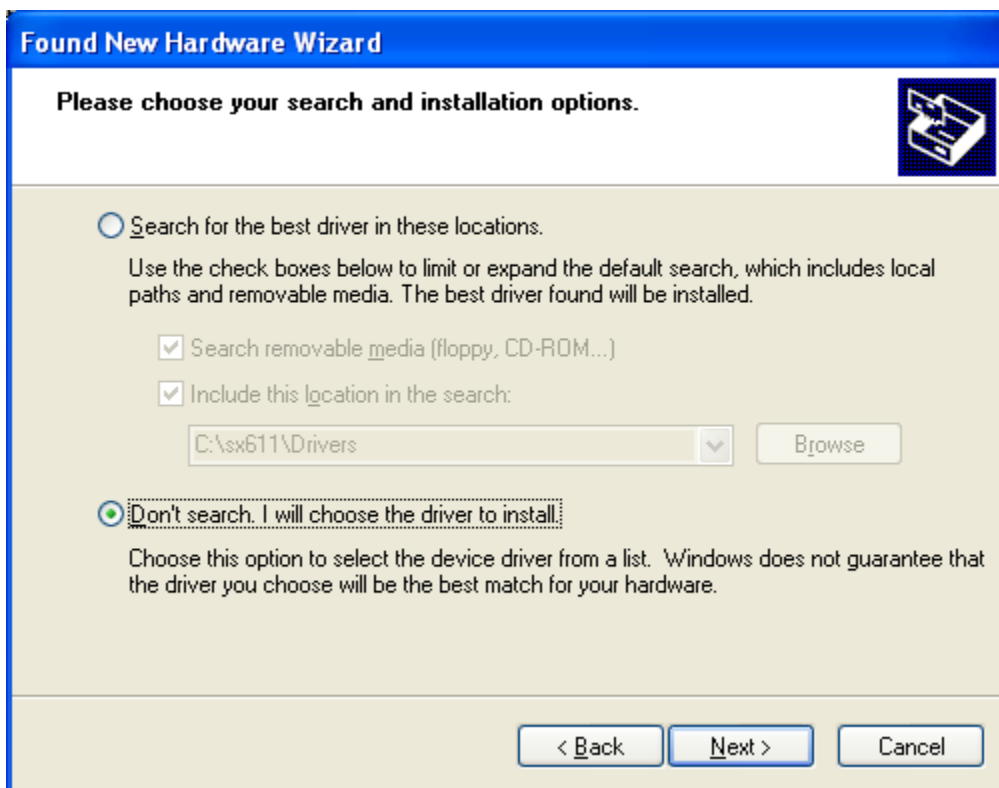
Method A: Add New Hardware Wizard pops up for 2255



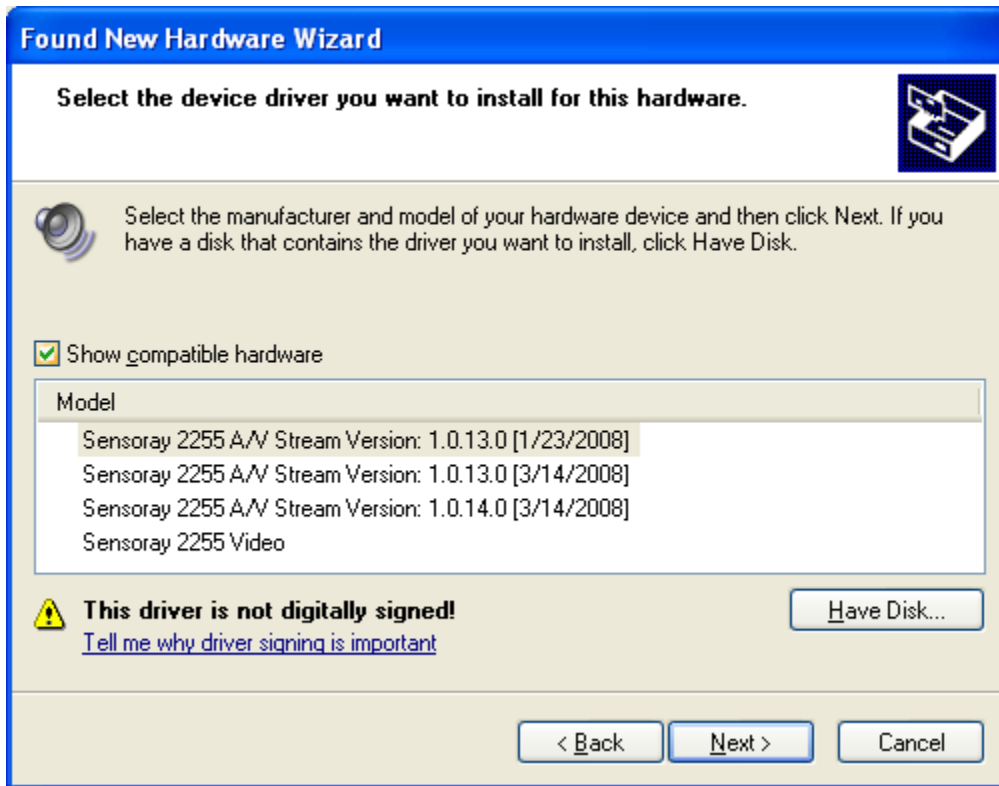
Select No, not this time, and click Next.



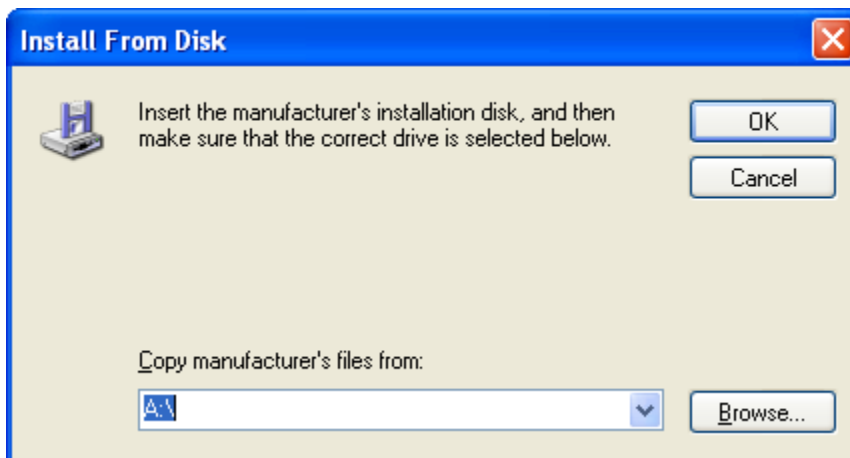
Select "Install from a list or specific location (Advanced)". Click next.



Select "Don't search. I will choose the driver to install".



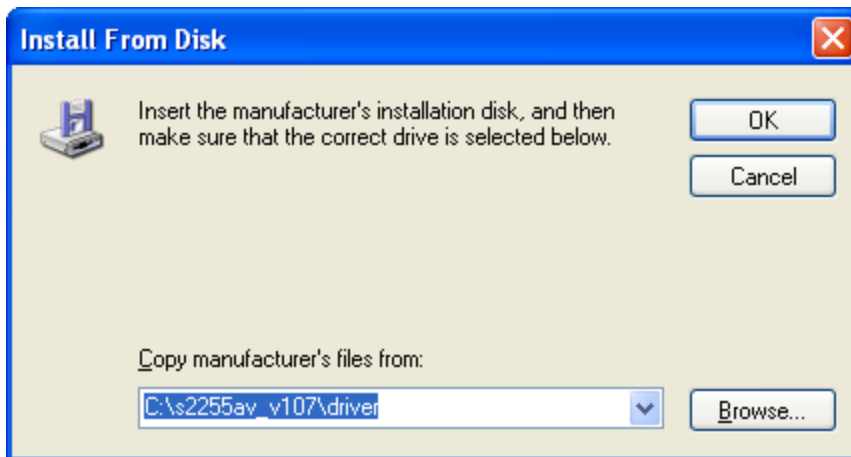
A list of drivers may appear. Windows caches drivers per USB port and keeps old versions. To update to the latest driver, click "Have Disk".



Either browse to the driver directory or enter the driver path on the "copy manufacturer's files from" text box.

Select the "driver" directory from the zip package s2255av_vXYZ.zip.

EG:



Click OK. You will then get the dialog below:

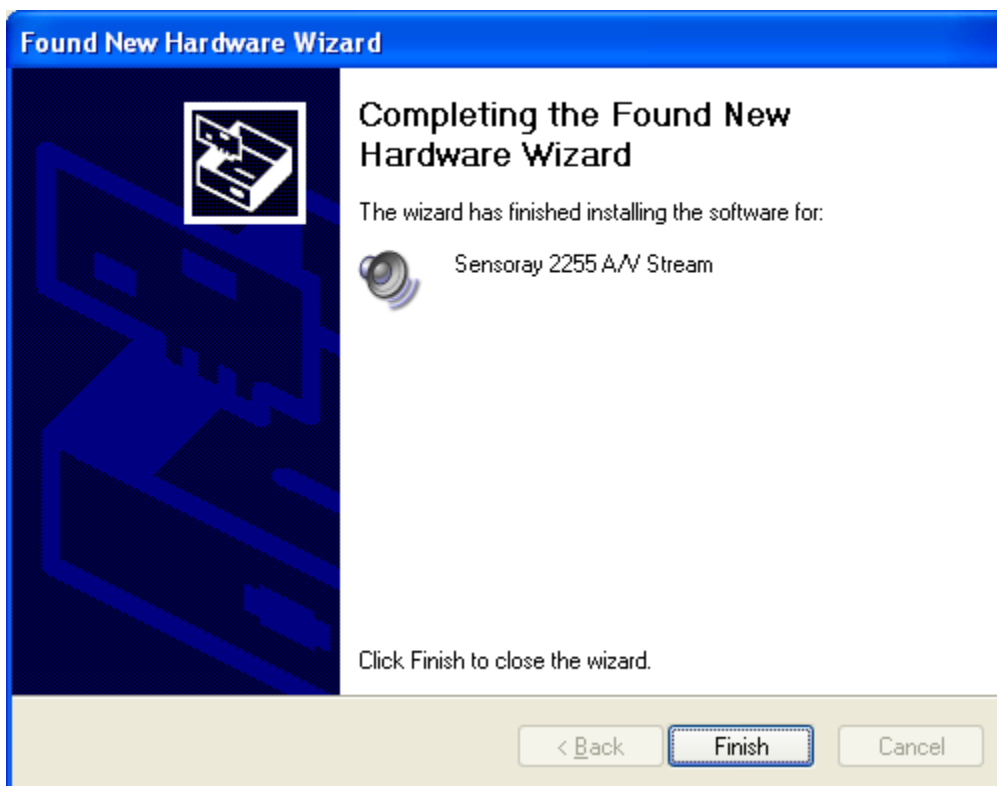


Click "Next"



Select "Continue Anyway".

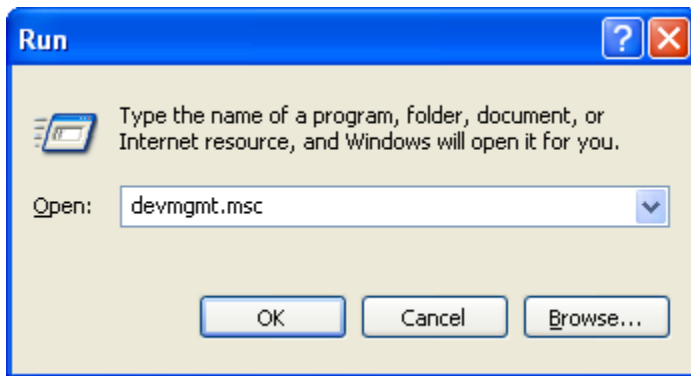
Dialog will show progress. After installation is complete:



Click Finish. The 2255 AVStream/DirectShow driver has been installed.

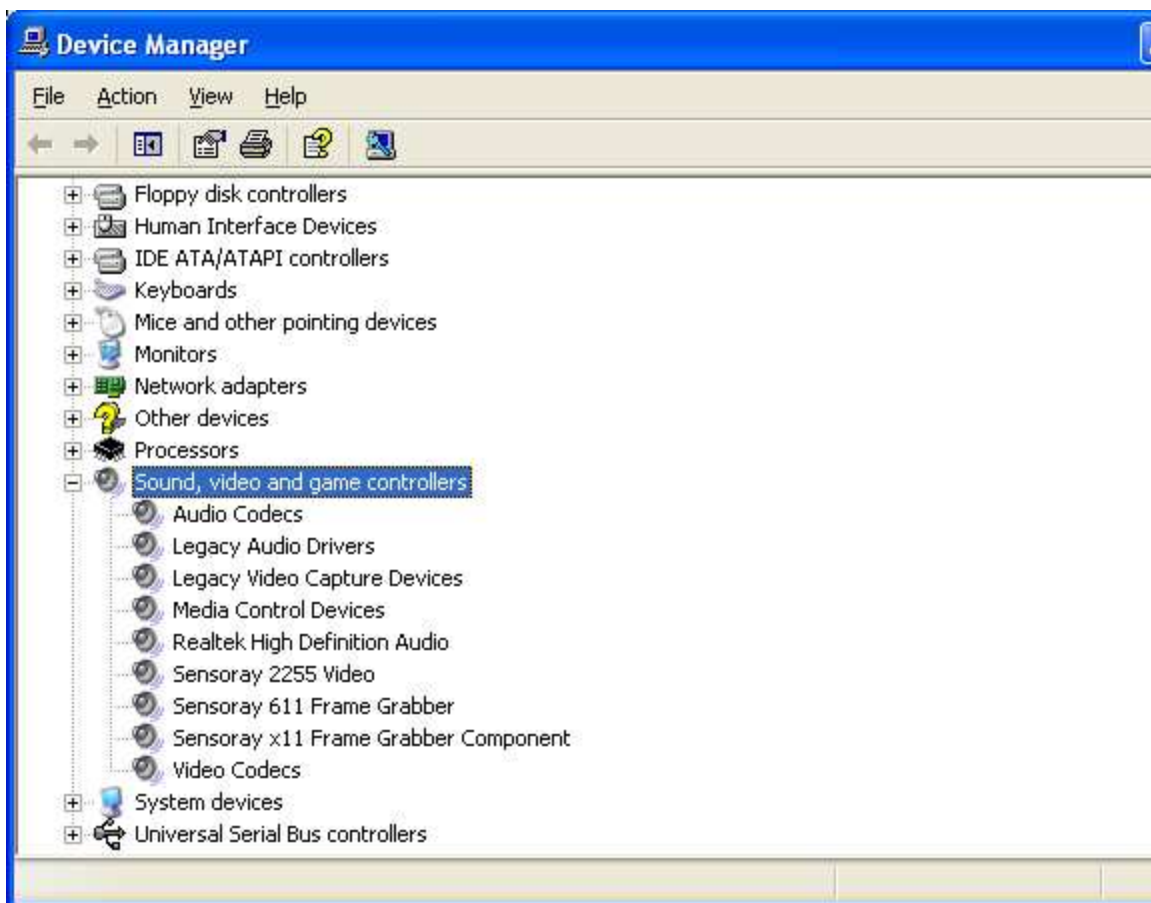
Method B: 2255 SDK driver already install

Hold down Windows Key-R (or click start on the taskbar and press run).



Enter devmgmt.msc in the run dialog. Click OK.

Device Manager dialog will appear. Click Sound, video and game controllers.



Right click "Sensoray 2255 Video" and select Update Driver.

Hardware update wizard appears.



The rest of the installation is the same as method A. Follow the same steps in Method A.