

Windows 7 :518 Driver Installation Instructions

Please Note: Ignore all references in the documentation to WinDriver or Sensoray “sxdriver”. The new 518 driver below replaces those legacy drivers.

- 1) First, select the base address for the 518 using the jumper system. Please reference the hardware manual for the 518 if this is unclear. If in doubt, use the default address of 0x2b0. Choose an address that doesn't conflict with other devices.
- 2) Download sdk_smartAD_win_1.1.0.zip (or newer version if available)
- 3) Extract sdk_smartAD_win zip file.
- 4) Change Directory to sdk_smartAD_win_1.1.0 (or newer version if available)
- 5) Run setup.exe and install the SDK examples and DLL
- 6) Press Windows button and open Device Manager.

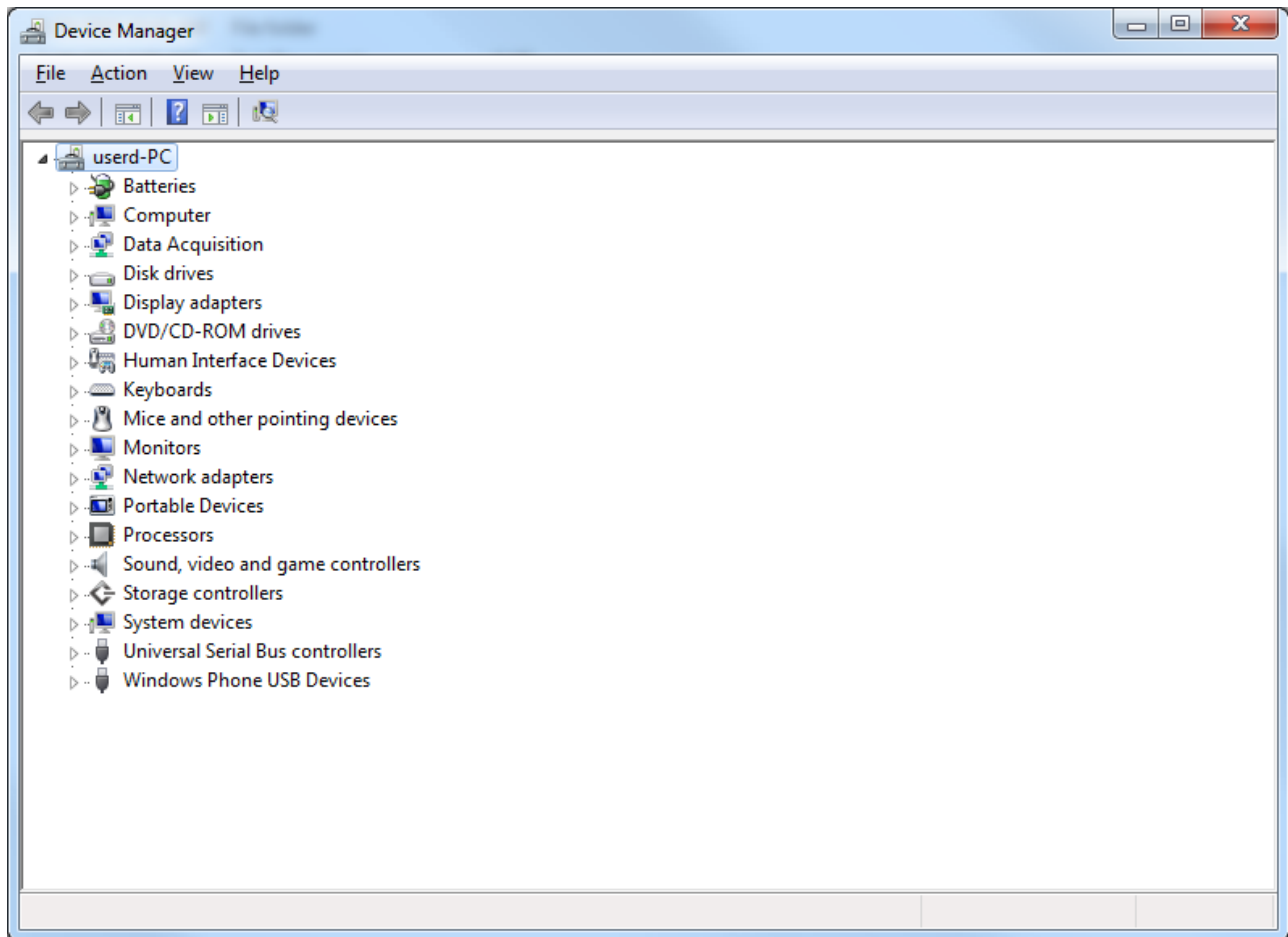


Figure 1: Device Manager

- 6) Click Action and select “Add Legacy Hardware”.

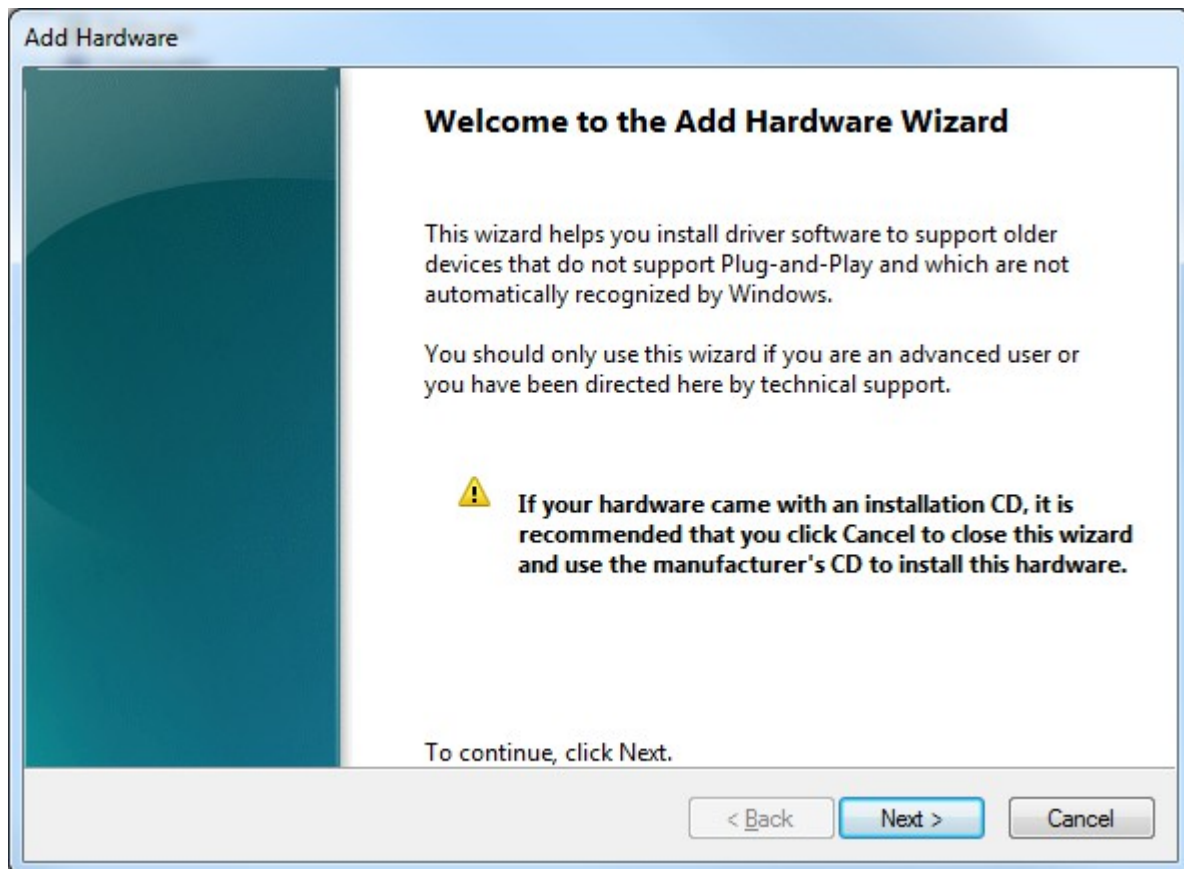


Figure 2: Add Hardware Wizard

7) The “Add Hardware Wizard” as shown in Figure 2 will appear. Click “Next”.

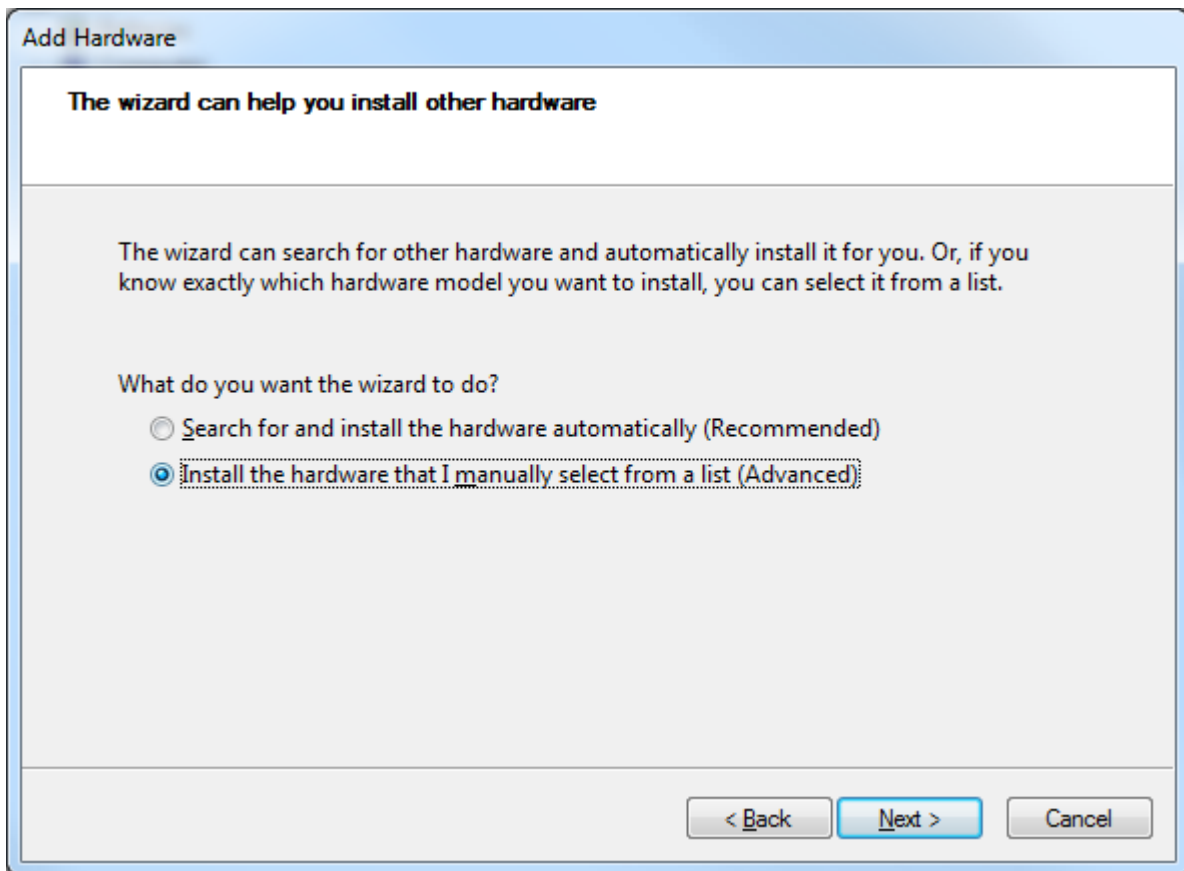


Figure 3: Advanced

- 8) Select "Install the hardware that I manually select from a list (Advanced)" as shown in Figure 3 and click next.

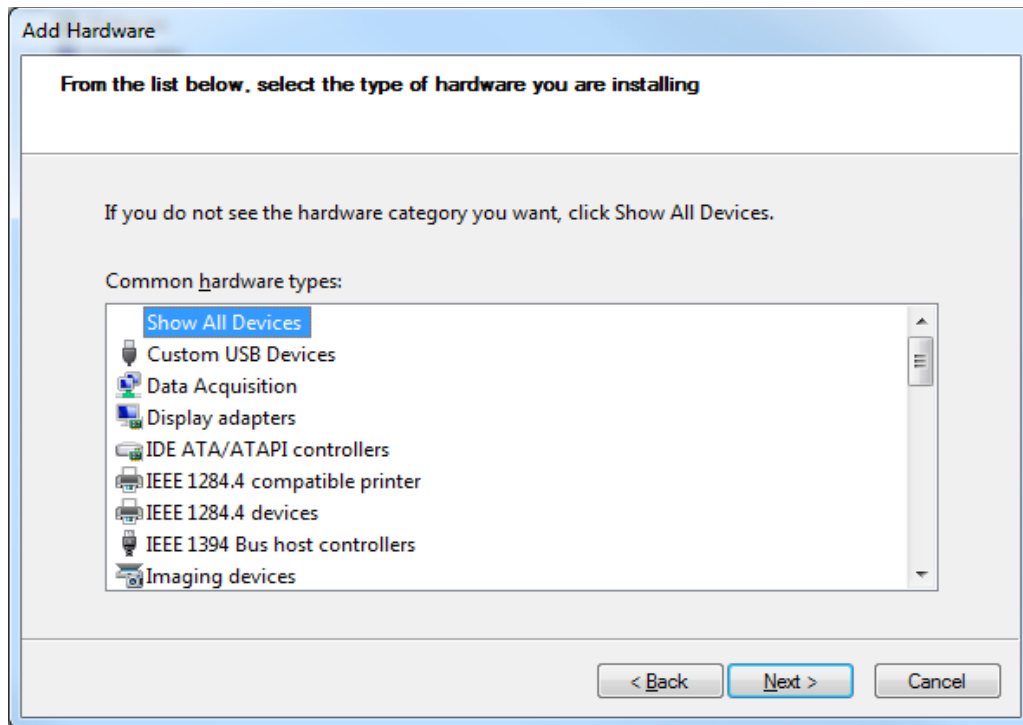


Figure 4: Show All Devices

- 9) Select "Show All Devices" and select Next as shown in Figure 4.
- 10) Click "Have Disk" button in "Select the device driver you want to install for this hardware" as shown in Figure 5.
- 11) Browse to directory containing the 518 driver. This is either the directory you extracted the SDK to OR the directory chosen for the installation. This is either the driver installed in C:\Program Files (x86)\Sensoray\SmartAD\driver\x32 for 32 bit OR C:\Program Files (x86)\Sensoray\SmartAD\driver\x64 for 64 bit windows. Please note that the installed drivers may be in the root "Program Files" instead of "Program Files (x86)".

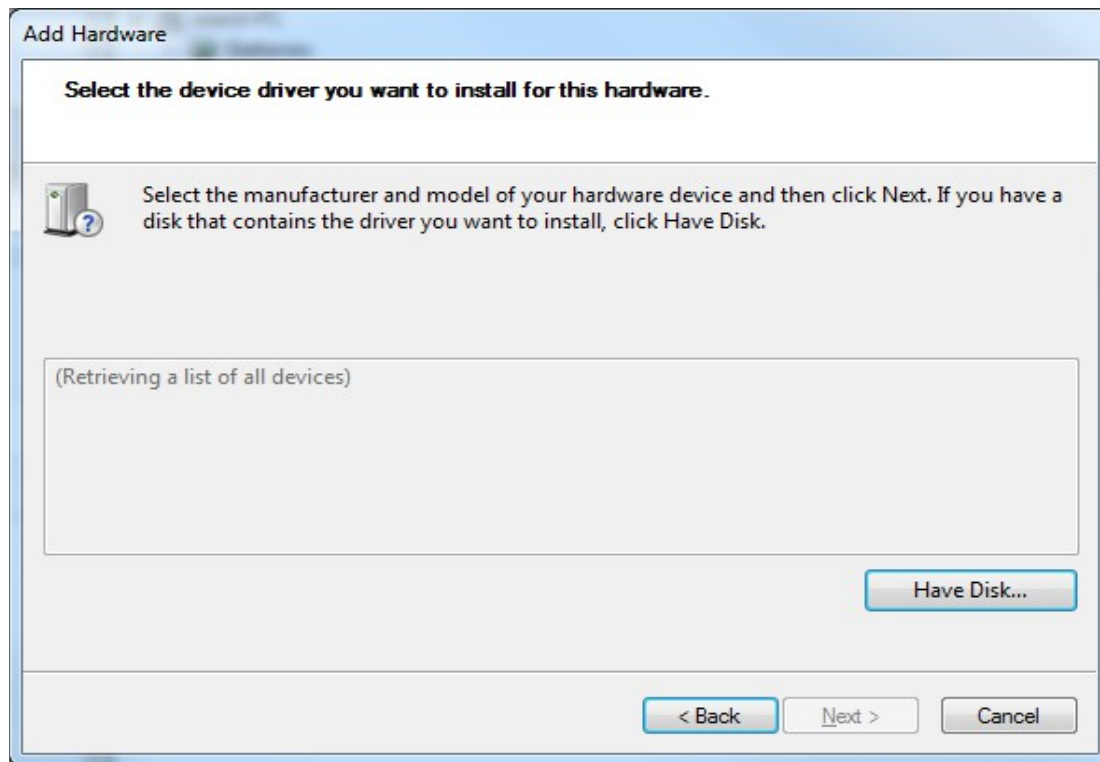


Figure 5: Have Disk

12) A list of Sensoray devices will appear (see Figure 6). Choose the Sensoray 518 Driver.

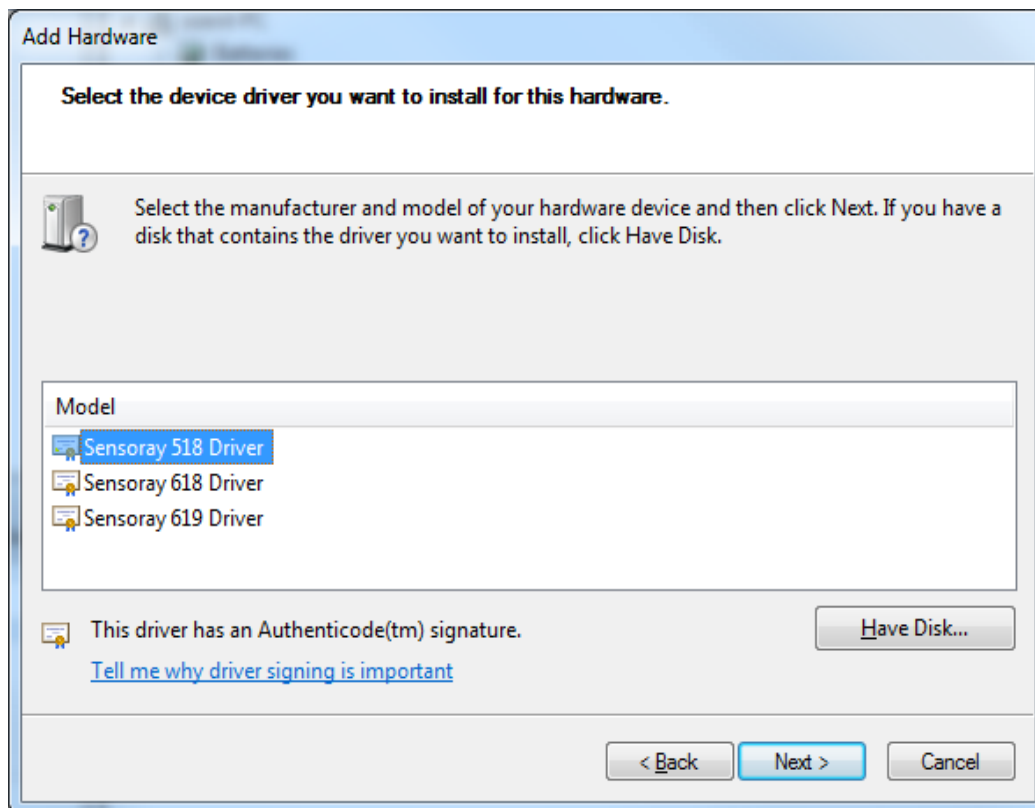


Figure 6: Choose 518 Driver

13) Click next. Figure 7 will appear. Click next to continue installing driver.

14) The Windows Security dialog (Figure 8) will appear. Click "Install" to continue installing the

- driver. This may take some time to install.
- 15) The 518 is an ISA/PC/104 device and the resources for this hardware must be installed manually. When the “Completing the Add Hardware Wizard” dialog appears, click on “View or change resources for this hardware (Advanced)”. See Figure 9.
 - 16) From the Resources dialog, click on “Set Configuration Manually”. See Figure 10.
 - 17) Unclick the “Use automatic settings” check box as seen in Figure 11.
 - 18) Double click the I/O Range and set to your device's base address range. Enter the base address first followed by the “-” sign, followed by the base address plus 7. For a 518 with a base address of 0x2b0, you would enter “2b0-2b7”. See Figure 12 for this example. Click OK. You may get a conflict warning pop-up. In many cases, the conflict may be ignored. Click Yes to continue. The conflicting device will be listed in the conflicting device list. If it says PCI bus, leave as is and see if the conflict remains after rebooting.
 - 19) Reboot the machine.
 - 20) Once the machine is rebooted, the 518 driver should be installed and ready to use. Check the device manager under “Data Acquisition” devices to make sure the 518 is operating without problems. There should be no yellow exclamation point.
 - 21) Run QuickSense or your program of choice. In QuickSense, go to Edit->Add Hardware and add the 518 device with the current base address (ie 0x2b0).

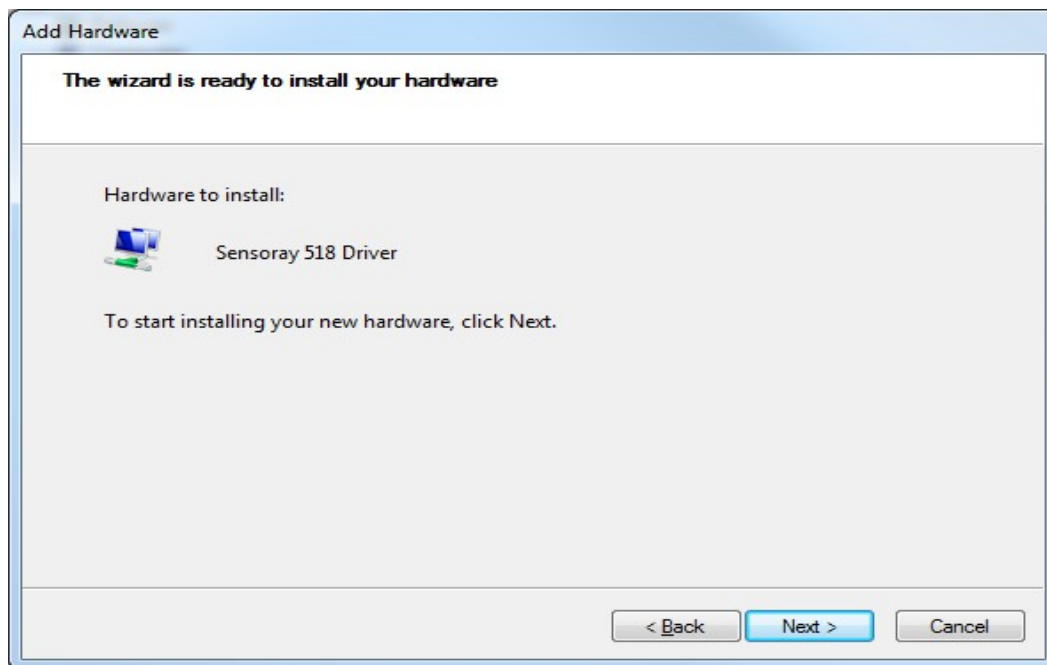


Figure 7: Start Installing

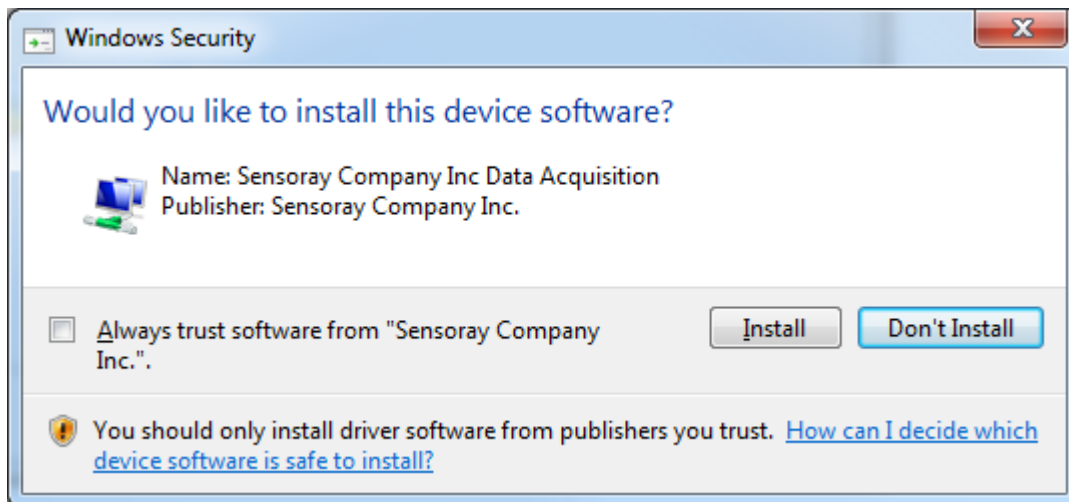


Figure 8: Security Dialog

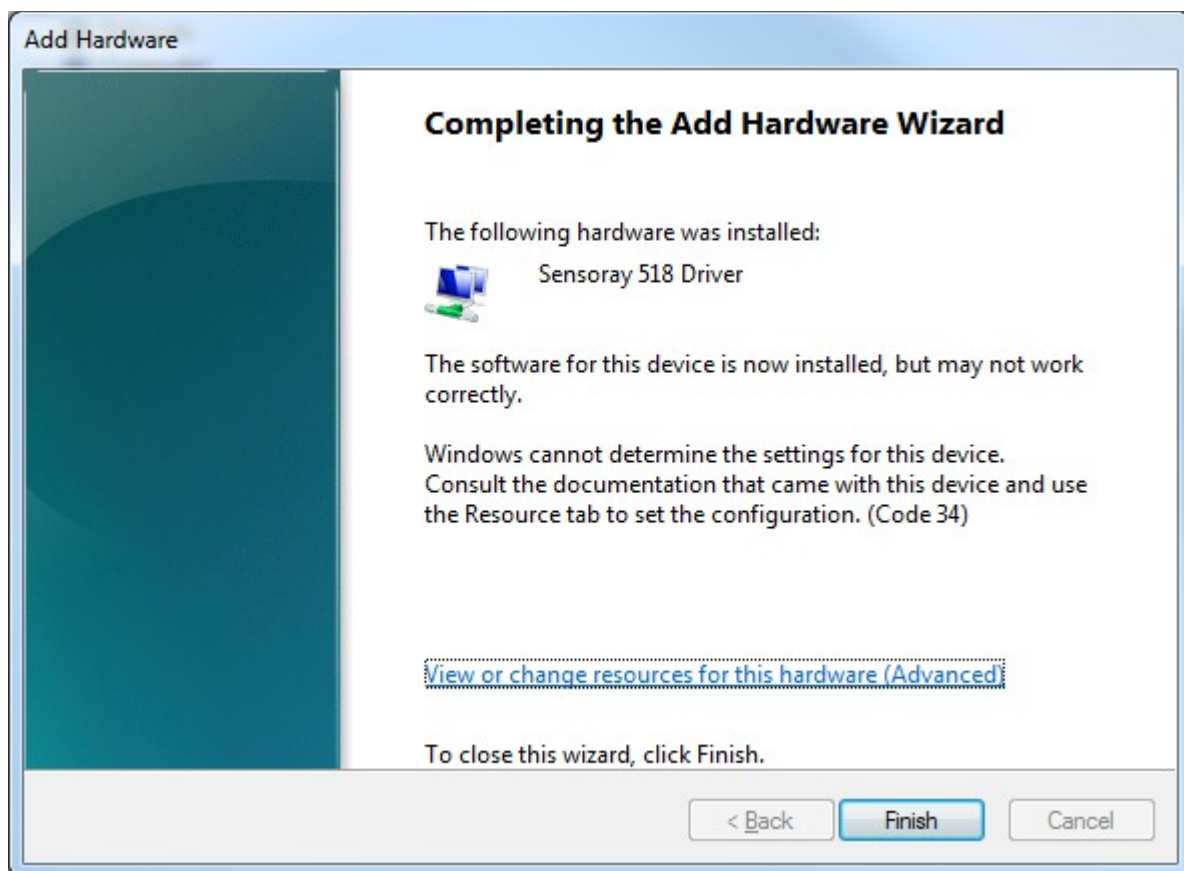


Figure 9: Completing the Add Hardware Wizard

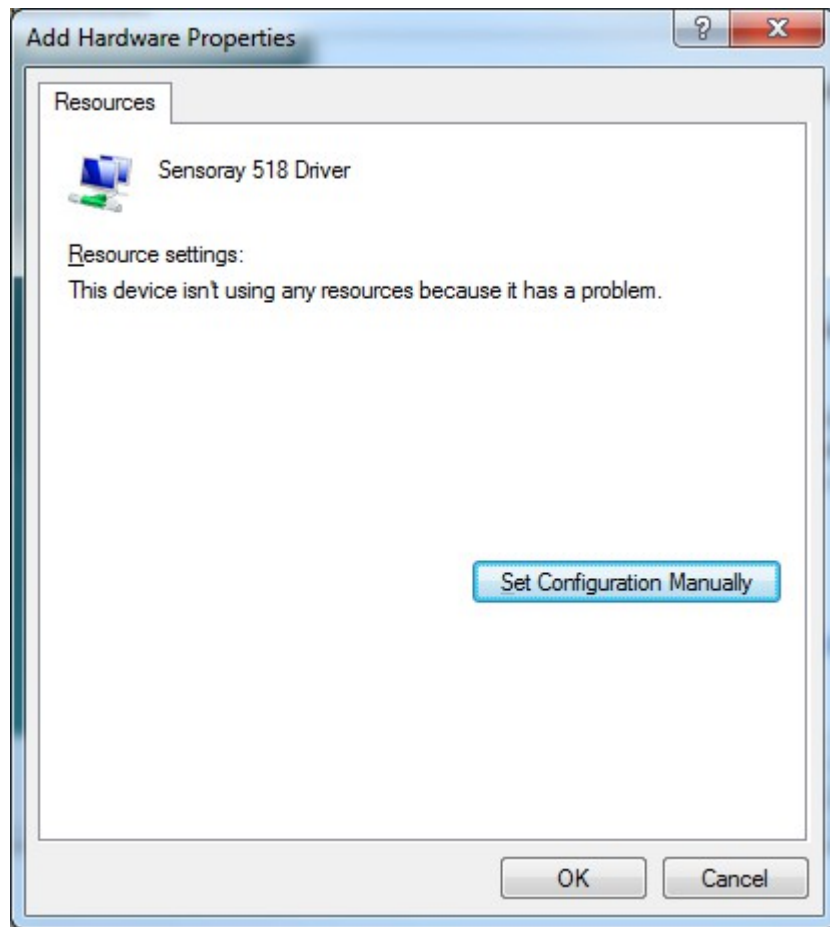


Figure 10: Resources

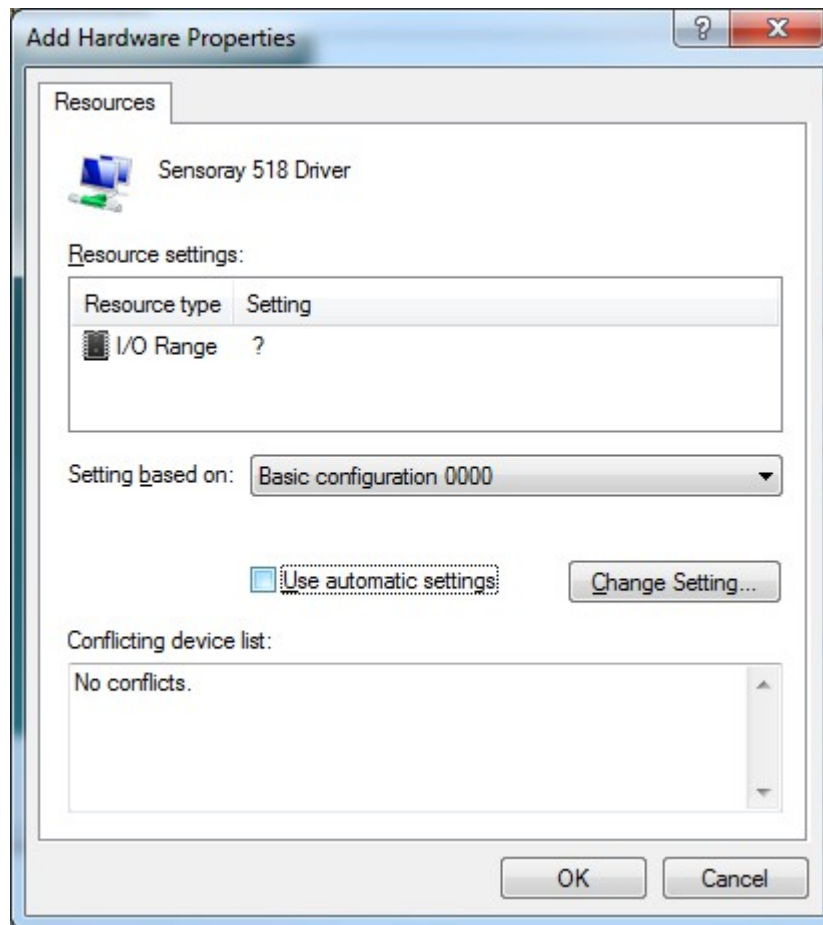


Figure 11: I/O Range

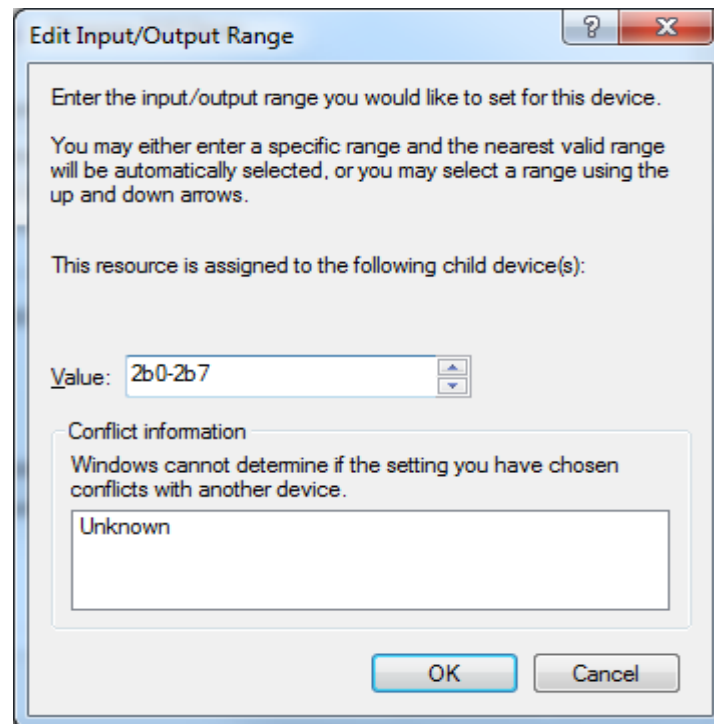


Figure 12: IO/Range